

CALTRAIN ELECTRIFICATION



SR 84 RAMP AND LANE CLOSURE NOTICE | April 2022

UPCOMING ACTIVITIES AND LANE CLOSURE

Between the period of April 25 and 29, Caltrain will be performing bridge barrier installation work in Redwood City that will require the temporary closure of one at a time of two lanes and the Laurel Street on-ramp from SR-84. The temporary closures are required due to construction equipment and bridge barrier equipment being installed on the bridge **Work will take place April 25 through 29 between 11pm and 5 am.**

Construction signs and an illuminated directional sign will direct the merging of vehicle traffic from the right eastbound and westbound lanes into the open lanes, then direct traffic from the closed on-ramp to the detour route along El Camino Real. Flaggers and cones will be present to assist the directing of traffic and construction equipment entering and exiting the work area. Lane and ramp closure and detour maps are provided on the reverse of this notice for vehicle traffic.

CONSTRUCTION ACTIVITIES

During the closure, crews will install bridge barrier mesh structures to protect the rail and OCS equipment for Caltrain Electrification.

Crews may also be working along the Caltrain corridor to install OCS equipment outside of hours noted above. Work may take place during the day and at night, with night work occurring between 9 p.m. and 5 a.m. There may also be occasional 24-hour work on weekends.

Caltrain will work with contractors to minimize night work to limit the impact to surrounding communities; however, some work must be performed at night in order to maintain regular Caltrain service. To mitigate noise and other impacts during night activities, the field team will utilize acoustical noise barrier blankets and will position lights away from residential and business areas.

Caltrain has established a dedicated project hotline and email for residents concerned about these potential impacts.

PROJECT OVERVIEW

Over the last decade, Caltrain has experienced a substantial increase in ridership and anticipates further increases in ridership demand as the Bay Area's population grows. Caltrain Electrification, scheduled to be operational by 2024, will electrify and upgrade the performance, operating efficiency, capacity, safety and reliability of Caltrain's commuter rail service.

Caltrain electrification is a key component of the Caltrain Modernization Program and consists of replacing diesel-hauled with an electric train system for services between Fourth and King Street Station in San Francisco and the Tamien Station in San Jose. The project will include the installation of new electrical infrastructure and the purchase of electric trains.

CONTACT INFORMATION

Caltrain has established a project information line and project e-mail for Caltrain Electrification to record and respond to questions and comments from residents and stakeholders.

The project information line can be reached at **650.399.9659** or toll free at **800.660.4287**.

The project e-mail is calmod@caltrain.com

Sign up for weekly construction updates can be found online at: www.calmod.org/get-involved


FOR MORE INFORMATION

 calmod.org

Para traducción llama al 1.800.660.4287
如需翻譯,請電 1.800.660.4287
Cần dịch thuật, xin gọi 1.800.660.4287

CONTACT

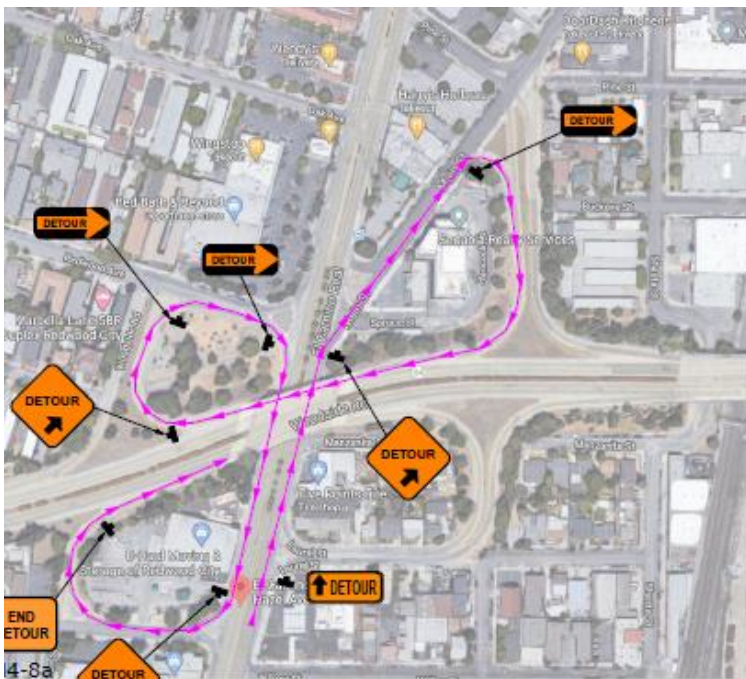
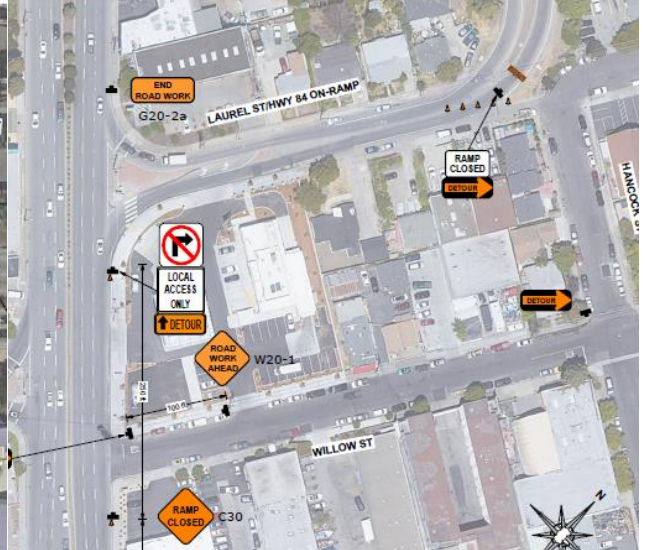
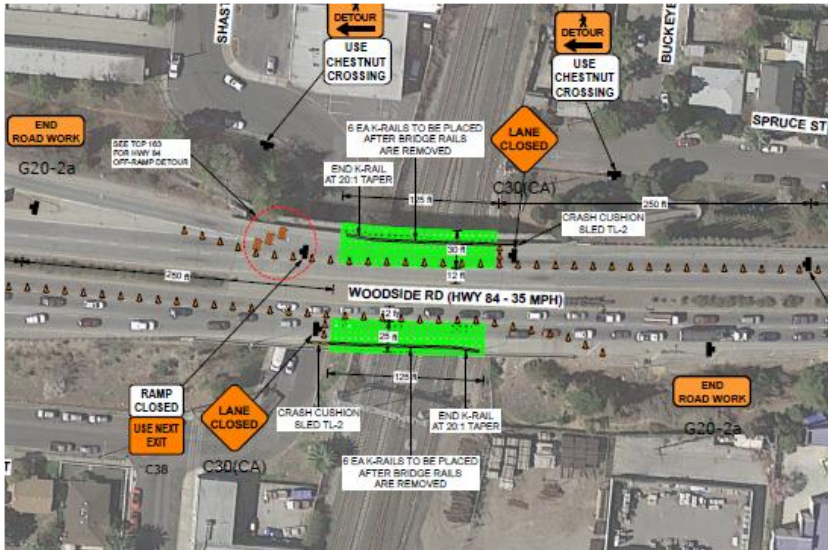
MAIL: 2121 S. El Camino Real, Suite 300
San Mateo, CA 94403

 650.399.9659

 calmod@caltrain.com

CALTRAIN ELECTRIFICATION

SR 84 RAMP AND LANE CLOSURE NOTICE | April 2022




FOR MORE INFORMATION

 calmod.org

Para traducción llame al 1.800.660.4287
 如需翻譯請電 1.800.660.4287
 Cần dịch thuật, xin gọi 1.800.660.4287

CONTACT

MAIL: 2121 S. El Camino Real, Suite 300
 San Mateo, CA 94403

 650.399.9659

 calmod@caltrain.com

