

# CALTRAIN ELECTRIFICATION



## MISSION BAY DRIVE LANE CLOSURE NOTICE | May, 2022

### UPCOMING ACTIVITIES AND LANE CLOSURE

On May 2, Caltrain will begin performing work in San Francisco that will require temporary lane closures of the eastbound and westbound lanes of Mission Bay Drive to vehicle and bicycle traffic. The temporary lane closures are required due to construction equipment and crews entering and exiting the Caltrain right-of-way at Mission Bay Drive.

**Work will take place from May 2 to May 15, with work hours between 7 a.m. to 3:30 p.m.**

Directional signs will direct the merging of eastbound and westbound vehicle and bicycle traffic from the right lane into the left lane of Mission Bay Drive. The crosswalk at the intersection of Mission Bay Drive and 7<sup>th</sup> Street will remain open. Sidewalks on the north and south sides of Mission Bay Drive will be open to pedestrian traffic during construction.

Detour maps are provided on the reverse of this notice for vehicle and bicycle traffic.

### CONSTRUCTION ACTIVITIES

During the closure, crews will be installing trenching for Caltrain Electrification. Work will consist of excavation, fill and electrical grounding. Crews will utilize equipment that requires the temporary closure of the above railroad crossing.

Caltrain will work with contractors to limit the impact to surrounding communities. Caltrain has established a dedicated project hotline and email for residents concerned about these potential impacts.

### PROJECT OVERVIEW

Over the last decade, Caltrain has experienced a substantial increase in ridership and anticipates further increases in ridership demand as the Bay Area's population grows. Caltrain Electrification, scheduled to be operational by 2024, will electrify and upgrade the performance, operating efficiency, capacity, safety, and reliability of Caltrain's commuter rail service.

Caltrain electrification is a key component of the Caltrain Modernization Program and consists of replacing diesel-hauled with an electric train system for services between Fourth and King Street Station in San Francisco and the Tamien Station in San Jose. The project will include the installation of new electrical infrastructure and the purchase of electric trains.

### CONTACT INFORMATION

Caltrain has established a project information line and project e-mail for Caltrain Electrification to record and respond to questions and comments from residents and stakeholders.

The project information line can be reached at **650.399.9659** or toll free at **800.660.4287**.

The project e-mail is [calmod@caltrain.com](mailto:calmod@caltrain.com)

Sign up for weekly construction updates can be found online at: [www.calmod.org/get-involved](http://www.calmod.org/get-involved)



#### FOR MORE INFORMATION

 [calmod.org](http://calmod.org)

 Para traducción llama al 1.800.660.4287  
如需翻譯,請電 1.800.660.4287  
Cần dịch thuật, xin gọi 1.800.660.4287

#### CONTACT

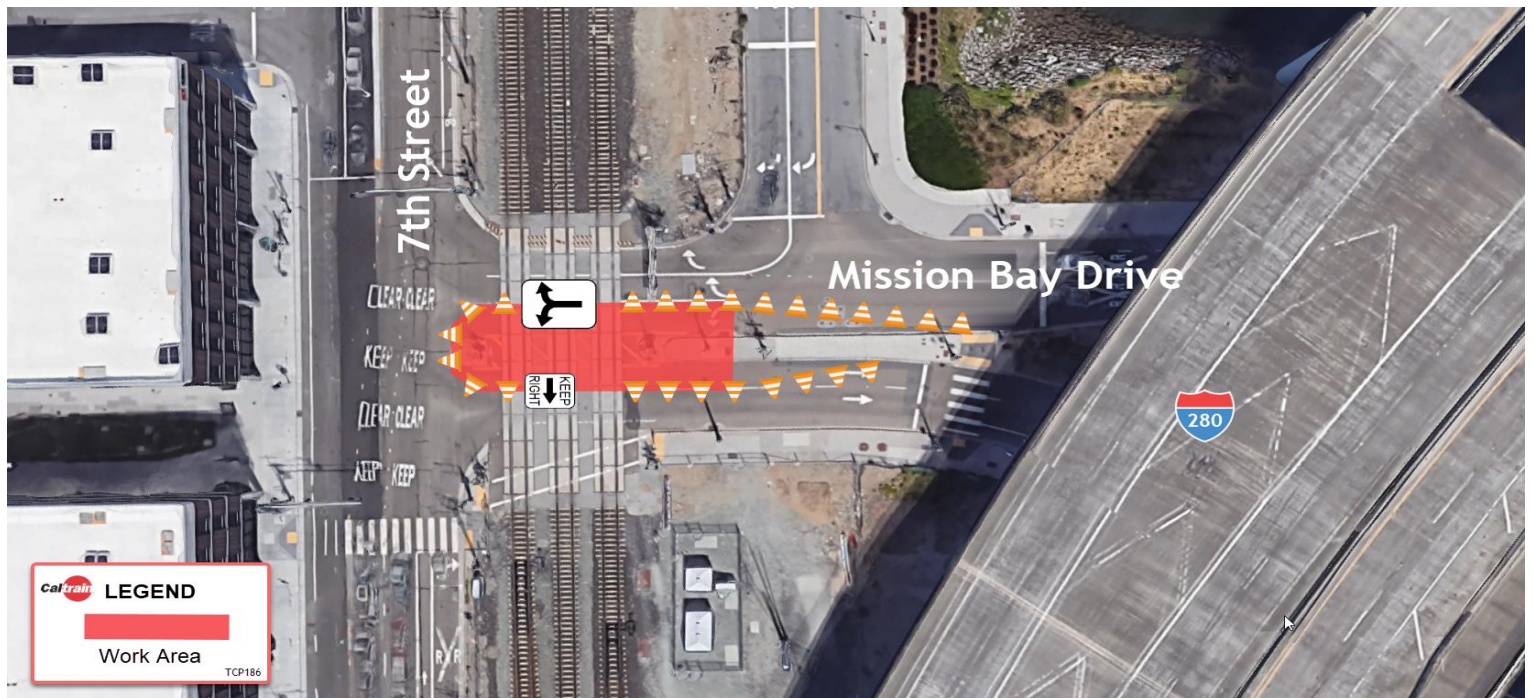
MAIL: 2121 S. El Camino Real, Suite 300  
San Mateo, CA 94403

 650.399.9659  
 [calmod@caltrain.com](mailto:calmod@caltrain.com)

# Caltrain Electrification Project


MISSION BAY DRIVE LANE CLOSURE NOTICE | May, 2022

## LANE CLOSURE MAP





### FOR MORE INFORMATION

 [calmod.org](http://calmod.org)

 Para traducción llama al 1.800.660.4287  
如需翻譯,請電 1.800.660.4287  
Cần dịch thuật, xin gọi 1.800.660.4287

### CONTACT

MAIL: 2121 S. El Camino Real, Suite 300  
San Mateo, CA 94403

 650.399.9659  
 [calmod@caltrain.com](mailto:calmod@caltrain.com)

