

# CALTRAIN ELECTRIFICATION



## GRAND AVENUE LANE CLOSURE NOTICE | May 2022

### UPCOMING ACTIVITIES AND LANE CLOSURE

Between the period of May 2 and May 20, Caltrain will be performing bridge barrier installation work in South San Francisco that will require the temporary closure of one eastbound and one westbound lane at a time of Grand Avenue. The temporary lane closures are required due to construction equipment and bridge barrier equipment being installed on the bridge. **Work will take place May 2 through May 20 between the hours of 9pm and 5 am.**

Construction signs, cones and an illuminated directional sign will direct the merging of vehicle traffic from the closed eastbound and westbound lanes into the nearest open lanes. Flaggers and cones will be present to assist the directing of traffic and construction equipment entering and exiting the work area. Lane closure maps are provided on the reverse of this notice for vehicle traffic.

### CONSTRUCTION ACTIVITIES

During the closure, crews will install bridge barrier mesh structures to protect the rail and OCS equipment for Caltrain Electrification.

Crews may also be working along the Caltrain corridor to install OCS equipment outside of hours noted above. Work may take place during the day and at night, with night work occurring between 9 p.m. and 5 a.m. There may also be occasional 24-hour work on weekends.

Caltrain will work with contractors to minimize night work to limit the impact to surrounding communities; however, some work must be performed at night in order to maintain regular Caltrain service. To mitigate noise and other impacts during night activities, the field team will utilize acoustical noise barrier blankets and will position lights away from residential and business areas.

Caltrain has established a dedicated project hotline and email for residents concerned about these potential impacts.

### PROJECT OVERVIEW

Over the last decade, Caltrain has experienced a substantial increase in ridership and anticipates further increases in ridership demand as the Bay Area's population grows. Caltrain Electrification, scheduled to be operational by 2024, will electrify and upgrade the performance, operating efficiency, capacity, safety and reliability of Caltrain's commuter rail service.

Caltrain electrification is a key component of the Caltrain Modernization Program and consists of replacing diesel-hauled with an electric train system for services between Fourth and King Street Station in San Francisco and the Tamien Station in San Jose. The project will include the installation of new electrical infrastructure and the purchase of electric trains.

### CONTACT INFORMATION

Caltrain has established a project information line and project e-mail for Caltrain Electrification to record and respond to questions and comments from residents and stakeholders.

The project information line can be reached at **650.399.9659** or toll free at **800.660.4287**.

The project e-mail is [calmod@caltrain.com](mailto:calmod@caltrain.com)

Sign up for weekly construction updates can be found online at: [www.calmod.org/get-involved](http://www.calmod.org/get-involved)


#### FOR MORE INFORMATION

 [calmod.org](http://calmod.org)

Para traducción llame al 1.800.660.4287  
如需翻譯,請電 1.800.660.4287  
Cần dịch thuật, xin gọi 1.800.660.4287

#### CONTACT

MAIL: 2121 S. El Camino Real, Suite 300  
San Mateo, CA 94403

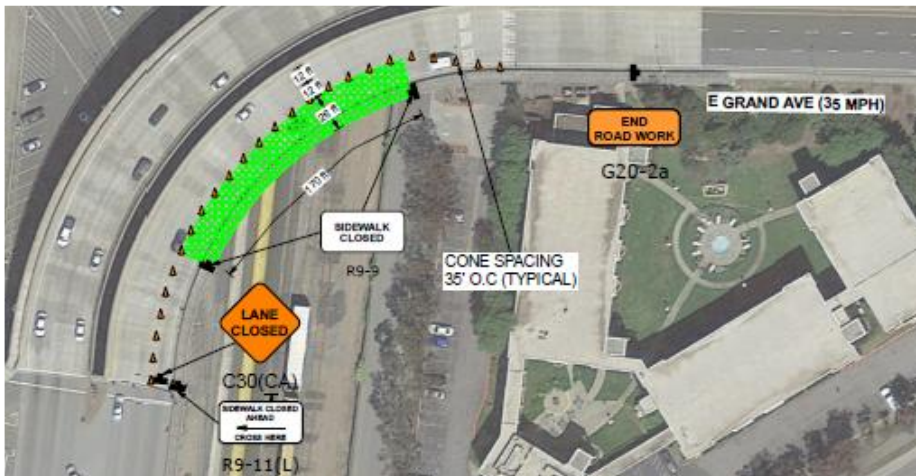
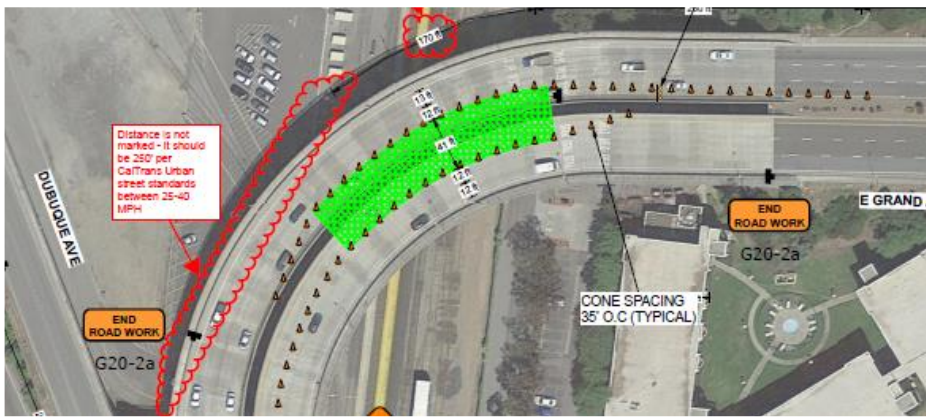
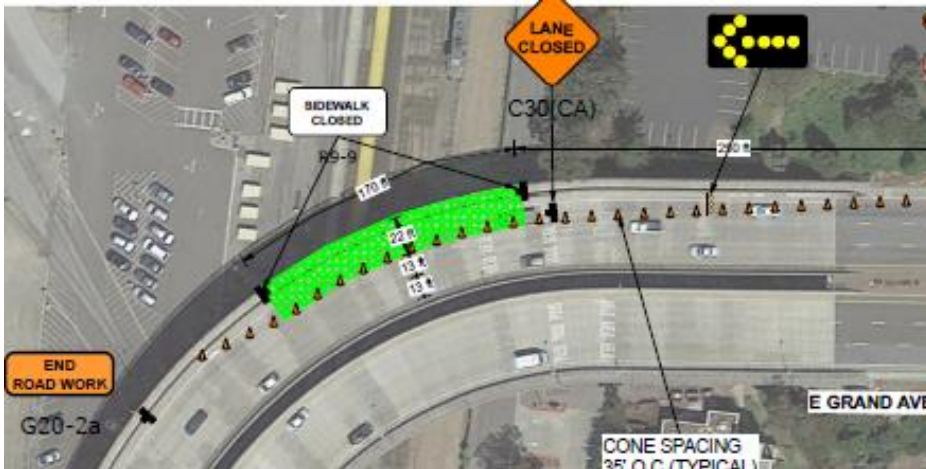
 650.399.9659

 [calmod@caltrain.com](mailto:calmod@caltrain.com)

# CALTRAIN ELECTRIFICATION

## GRAND AVENUE LANE CLOSURE NOTICE | May 2022

### WORK AREA GRAND AVENUE





#### FOR MORE INFORMATION

 [calmod.org](http://calmod.org)

Para traducción llama al 1.800.660.4287  
如需翻譯,請電 1.800.660.4287  
Cần dịch thuật, xin gọi 1.800.660.4287

#### CONTACT

MAIL: 2121 S. El Camino Real, Suite 300  
San Mateo, CA 94403

 650.399.9659  
 [calmod@caltrain.com](mailto:calmod@caltrain.com)



# CALTRAIN ELECTRIFICATION

---


## FOR MORE INFORMATION

 [calmod.org](http://calmod.org)

Para traducción llama al 1.800.660.4287  
如需翻譯請電 1.800.660.4287  
Cần dịch thuật, xin gọi 1.800.660.4287

## CONTACT

MAIL: 2121 S. El Camino Real, Suite 300  
San Mateo, CA 94403

 650.399.9659

 [calmod@caltrain.com](mailto:calmod@caltrain.com)

