

# CALTRAIN ELECTRIFICATION



## E. EVELYN AVENUE LANE CLOSURE NOTICE | March, 2022

### UPCOMING ACTIVITIES AND LANE CLOSURE

Beginning on March 15, Caltrain will begin performing survey work along the Caltrain right-of-way in Mountain View that will require the temporary lane closure of the right northbound lane of Evelyn Avenue near Moorpark Way. The temporary lane closure is required due to bridge survey activities along the Caltrain right-of-way on E. Evelyn Avenue.

**Work will take place Tuesday March 15 and again on Thursday March 17. Work hours are between 7:30 a.m. to 4 p.m.**

Construction signs and an illuminated directional sign will direct the merging of northbound vehicle and bicycle traffic from the right lane into the left northbound lane of Evelyn Avenue in order to assist the directing of traffic away from construction equipment working along the Caltrain right-of-way adjacent to Evelyn Avenue. The northbound bicycle lane of E. Evelyn Avenue will be closed during construction.

Detour maps are provided on the reverse of this notice for vehicle and bicycle traffic.

### CONSTRUCTION ACTIVITIES

During the closure crews will perform a bridge survey utilizing a boom lift along the tracks next to Evelyn Avenue.

Crews may also be working along the Caltrain corridor to install OCS infrastructure outside of the closure hours noted above. Work may take place during the day and at night, with night work occurring between 10 p.m. and 5 a.m. There may also be occasional 24-hour work on weekends.

Caltrain will work with contractors to minimize night work to limit the impact to surrounding communities; however, some work must be performed at night in order to maintain regular Caltrain service. To mitigate noise and other impacts during night activities, the field team will utilize acoustical noise barrier blankets and will position lights away from residential and business areas. Caltrain has established a

dedicated project hotline and email for residents concerned about these potential impacts.

### PROJECT OVERVIEW

Over the last decade, Caltrain has experienced a substantial increase in ridership and anticipates further increases in ridership demand as the Bay Area's population grows. Caltrain Electrification, scheduled to be operational by 2024, will electrify and upgrade the performance, operating efficiency, capacity, safety, and reliability of Caltrain's commuter rail service.

Caltrain electrification is a key component of the Caltrain Modernization Program and consists of replacing diesel-hauled with an electric train system for services between Fourth and King Street Station in San Francisco and the Tamien Station in San Jose. The project will include the installation of new electrical infrastructure and the purchase of electric trains.

### CONTACT INFORMATION

Caltrain has established a project information line and project e-mail for Caltrain Electrification to record and respond to questions and comments from residents and stakeholders.


The project information line can be reached at **650.399.9659** or toll free at **800.660.4287**.

The project e-mail is [calmod@caltrain.com](mailto:calmod@caltrain.com)

Sign up for weekly construction updates can be found online at: [www.calmod.org/get-involved](http://www.calmod.org/get-involved)



#### FOR MORE INFORMATION

 [calmod.org](http://calmod.org)

 Para traducción llama al 1.800.660.4287  
如需翻譯,請電 1.800.660.4287  
Cần dịch thuật, xin gọi 1.800.660.4287

#### CONTACT

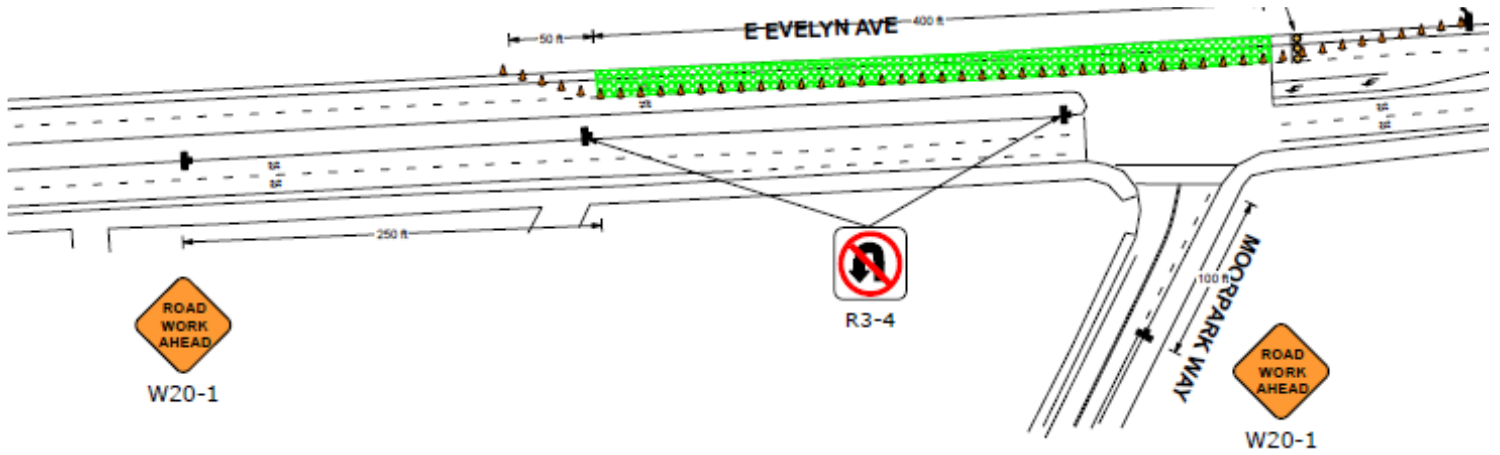
MAIL: 2121 S. El Camino Real, Suite 300  
San Mateo, CA 94403

 650.399.9659  
 [calmod@caltrain.com](mailto:calmod@caltrain.com)

# Caltrain Electrification Project

## E. EVELYN AVENUE LANE CLOSURE NOTICE | March, 2022

### LANE CLOSURE MAP





#### FOR MORE INFORMATION

 [calmod.org](http://calmod.org)

 Para traducción llama al 1.800.660.4287  
如需翻譯,請電 1.800.660.4287  
Cần dịch thuật, xin gọi 1.800.660.4287

#### CONTACT

MAIL: 2121 S. El Camino Real, Suite 300  
San Mateo, CA 94403

 650.399.9659  
 [calmod@caltrain.com](mailto:calmod@caltrain.com)

