

Peninsula Corridor Electrification

Creates Thousands of Jobs and Supports Continued Productivity

SUSTAINABILITY
Improved Air Quality
Reduced Regional Traffic Congestion



CONVENIENCE
Increased Service Frequency and Reduced Travel Time

CAPACITY
Accommodates More Riders
Per Hour/Direction

ELECTRIFICATION Caltrain **GROUND BREAKING**

BELMONT FACT SHEET | November 2018

PROJECT OVERVIEW

Over the last decade, Caltrain has experienced a substantial increase in ridership and anticipates further increases in ridership demand as the Bay Area's population grows. Caltrain Electrification, scheduled to be operational by 2022, will electrify and upgrade the performance, operating efficiency, capacity, safety and reliability of Caltrain's commuter rail service.

Caltrain Electrification is a key component of the Caltrain Modernization Program and consists of replacing diesel-hauled trains with electric trains for service between Fourth and King Street Station in San Francisco and the Tamien Station in San Jose. The project will include the installation of new electrical infrastructure and the purchase of electric vehicles.

CONSTRUCTION ACTIVITIES

In September 2017, Caltrain began performing work along the railroad corridor in Belmont.

The activities during this time included locating underground utilities, testing soil conditions, inspecting signal/communication equipment, potholing, and pruning/removing trees in preparation for the installation and operation of the Overhead Contact System that will power electric trains.

DATE	WORK ACTIVITY	DURATION
In Progress	Potholing	2-3 months
In Progress	Foundation Construction	3-4 months
Late 2018	Pole Installation	2-3 months
Spring 2019	Wire Installation	2-3 months

Expected durations indicates first and last day of activity. Number of actual work days will be fewer.

FOUNDATION INSTALLATION

Foundation work is in progress and will continue over the duration of 3-4 months. Activities for the foundation construction will include excavation, placement of rebar, concrete fill and electrical grounding. Foundations are typically spaced 180 feet apart along the corridor and crews can complete a total of 2-6 foundations per night.

POLE AND WIRE INSTALLATION

Pole and wire installation will start late 2018 and continue for a duration of 4-6 months. Caltrain will be installing approximately eighty-one (81) poles along the Caltrain Right-of-Way in the Belmont corridor. Poles will vary in height from 30 feet to 50 feet. Poles will be spaced approximately 180 feet apart.

WORK HOURS


Work will take place during the day and at night, with night work occurring between 8 p.m. and 6 a.m. There may be occasional 24-hour work on weekends. Caltrain will work with contractors to minimize night work to limit the impact to surrounding communities; however, some work must be performed at night in order to maintain regular Caltrain service. To mitigate noise and other impacts during night and weekend activities, the field team will use acoustical noise barrier blankets and will position lights away from residential and business areas. Caltrain has established a dedicated project hotline and email for residents concerned about these potential impacts.

FOR MORE INFORMATION

 calmod.org

CONTACT

MAIL: 2121 S. El Camino Real, Suite 300
San Mateo, CA 94403

 650.399.9659

 calmod@caltrain.com



Peninsula Corridor Electrification

BELMONT FACT SHEET | November 2018

CONTACT INFORMATION

Caltrain has established a project information line and project e-mail for Caltrain Electrification to record and respond to questions and comments from residents and stakeholders.

The project information line can be reached at **650.399.9659** or toll free at **800.660.4287**

The project e-mail is calmod@caltrain.com

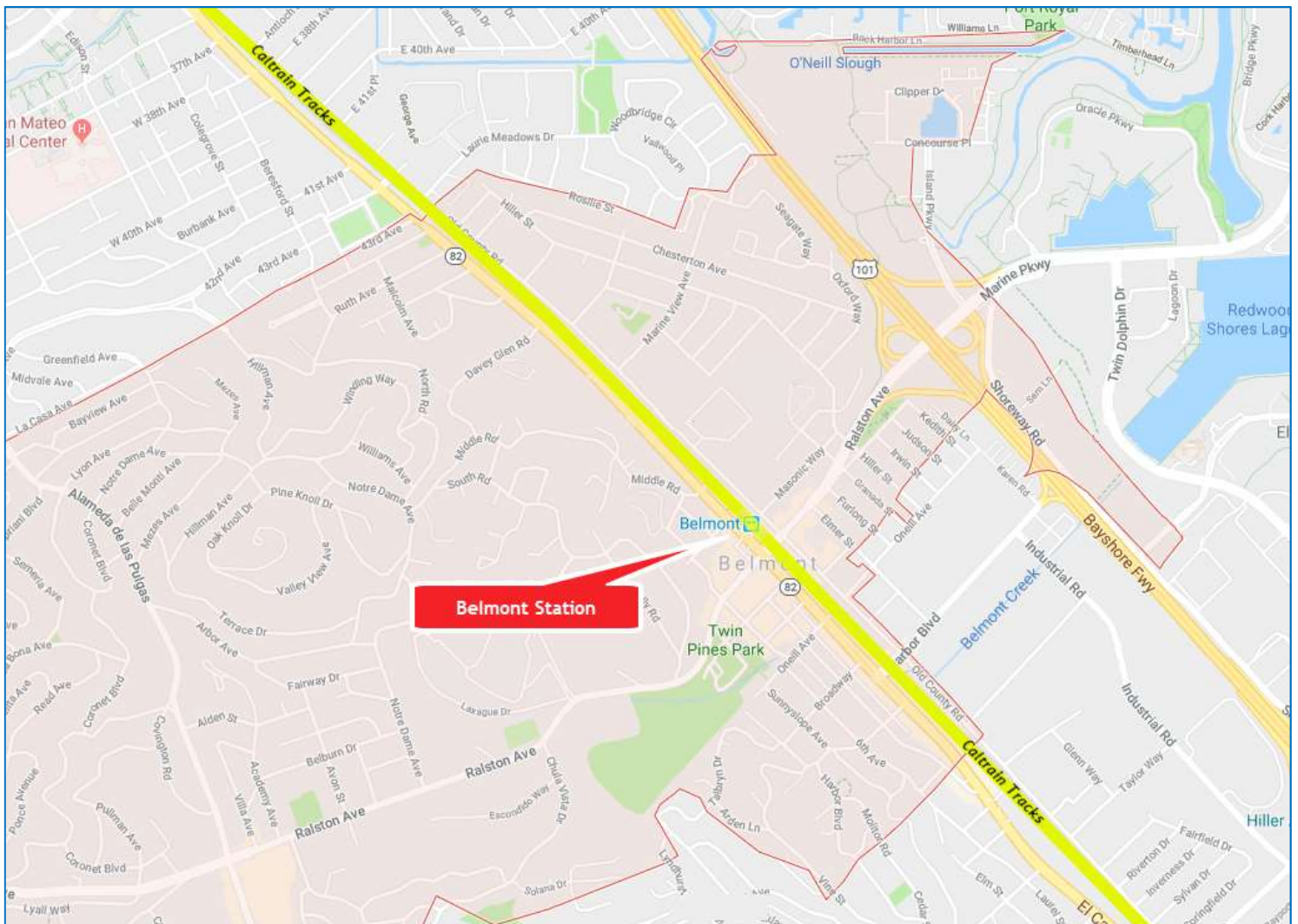
In addition, Caltrain has established a community outreach office at:

2121 S. El Camino Real
Suite A-100
San Mateo, CA 94403

A project representative will be available to answer questions in person from 9:00 a.m. and 5:00 p.m. Mondays through Fridays during construction.

Sign up for weekly construction updates at:
www.calmod.org/get-involved

BELMONT WORK AREA





FOR MORE INFORMATION

 calmod.org

CONTACT

MAIL: 2121 S. El Camino Real, Suite 300
San Mateo, CA 94403

 650.399.9659
 calmod@caltrain.com

