

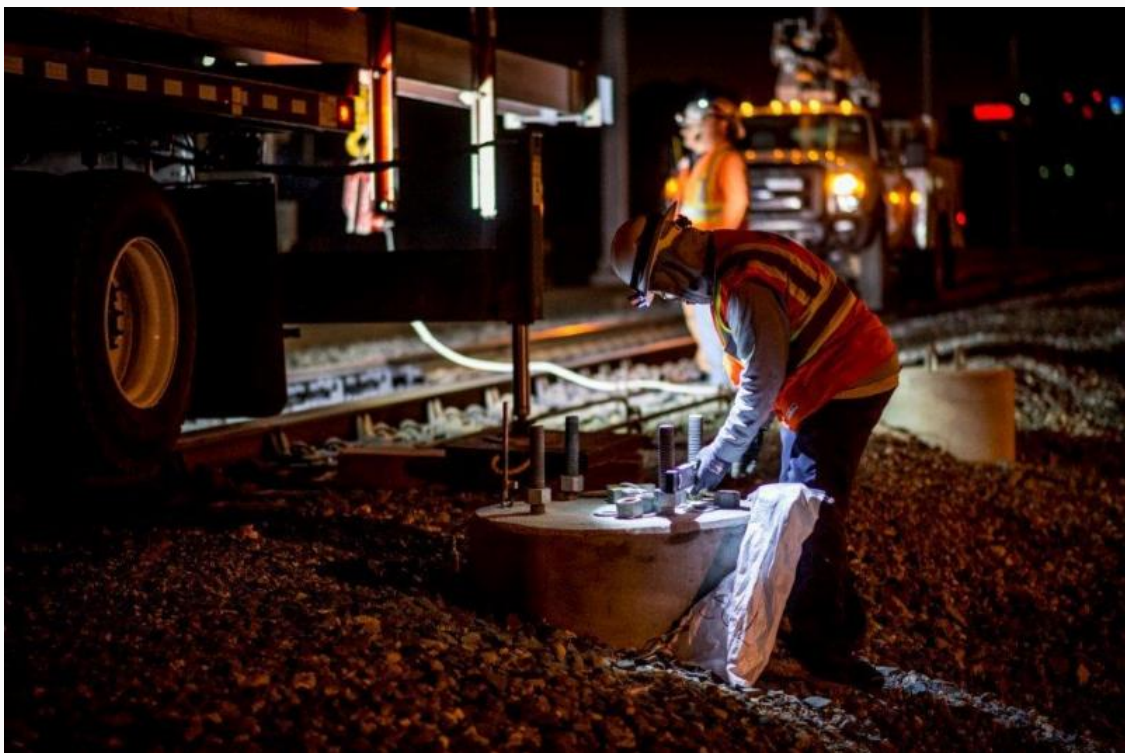


June 2018

CALMOD E-NEWS

In this Issue: Did you vote for your favorite exterior train design? See the winning exterior design applied to the first train cab! New Traction Power Substation in San Jose underway, construction updates.

CONSTRUCTION UPDATE



Construction to make Caltrain a modern, electric commuter rail system continues! In June, crews began potholing utilities in San Francisco and Brisbane while continuing foundation installation in South San Francisco, San Bruno, Millbrae, Burlingame and San Mateo. Crews have also started construction of the Traction Power Substation in San Jose which will provide power to the overall system once electrified.

To sign up for weekly construction updates or for more construction information, visit CalMod.org/Construction.

ELECTRIC TRAINS UPDATE



Electric train manufacturing continued in June, with the first cab donning the Caltrain **exterior design** (selected by Caltrain riders and the community). Fabrication of the bathroom and bike car underframes for the first trainset commenced, and carshell structural testing is underway on a cab car designated for the second trainset. The vehicles continue to take shape as carbody subassemblies and the welding of car shell structures continues.

View more pictures at CalMod.org/Gallery.

UPCOMING EVENTS

Local Policy Makers Group (LPMG)

June 28, 2018 at 5:30 p.m.

Samtrans Administrative Offices

Edward J. Bacciocco Auditorium

1250 San Carlos Ave., San Carlos

For more details and a full list of upcoming meetings please visit CalMod.org/events.

WHAT IS CALMOD?

The Caltrain Modernization Program (CalMod) includes electrification and other projects that will upgrade the performance, efficiency, capacity, safety and reliability of Caltrain's service. The current electrification project will electrify the corridor from San Francisco to San Jose and replace 75 percent of Caltrain's diesel service with high-performance electric trains, reducing air pollution and providing better service to more riders.

CalMod.org



650-399-9659 | calmod@caltrain.com | Calmod.org

STAY CONNECTED:



Caltrain Modernization, 2121 S. El Camino, San Mateo, CA 94403

[SafeUnsubscribe™ {recipient's email}](#)

[Forward this email](#) | [Update Profile](#) | [About our service provider](#)

Sent by lowl@samtrans.com in collaboration with

Constant Contact 

Try it free today