

CALTRAIN ELECTRIFICATION



16TH STREET LANE CLOSURE NOTICE | August, 2021

UPCOMING ACTIVITIES AND LANE CLOSURE

On August 30, Caltrain will begin performing foundation installation work in San Francisco that will require temporary lane closures of the eastbound and westbound lanes of 16th Street to vehicle and bicycle traffic for three weeks. The temporary lane closures are required due to construction equipment and crews entering and exiting the Caltrain right-of-way at 16th Street.

Work will take place from August 30 to September 17 with work hours between 7 a.m. to 3:30 p.m.

Illuminated and directional signs will direct the merging of eastbound and westbound vehicle and bicycle traffic from the right or left lane into the adjoining lane of 16th Street. The sidewalks on the north and south sides of 16th Street will be open to pedestrian traffic during construction.

Detour maps are provided on the reverse of this notice for vehicle and bicycle traffic.

CONSTRUCTION ACTIVITIES

During the closure, crews will install concrete foundations for Caltrain Electrification. Work will consist of excavation, placement of rebar, concrete fill, electrical grounding, and the installation of foundations. Crews will utilize on-track equipment that requires the temporary closure of the above railroad crossing.

Crews will also be working along the Caltrain corridor to install foundations outside of the closure hours noted above. Work may take place during the day and at night, with night work occurring between 10 p.m. and 5 a.m. There may also be occasional 24-hour work on weekends.

Caltrain will work with contractors to minimize night work to limit the impact to surrounding communities; however, some work must be performed at night in order to maintain regular Caltrain service. To

mitigate noise and other impacts during night activities, the field team will utilize acoustical noise barrier blankets and will position lights away from residential and business areas. Caltrain has established a dedicated project hotline and email for residents concerned about these potential impacts.

PROJECT OVERVIEW

Over the last decade, Caltrain has experienced a substantial increase in ridership and anticipates further increases in ridership demand as the Bay Area's population grows. Caltrain Electrification, scheduled to be operational by 2024, will electrify and upgrade the performance, operating efficiency, capacity, safety, and reliability of Caltrain's commuter rail service.

Caltrain electrification is a key component of the Caltrain Modernization Program and consists of replacing diesel-hauled with an electric train system for services between Fourth and King Street Station in San Francisco and the Tamien Station in San Jose. The project will include the installation of new electrical infrastructure and the purchase of electric trains.

CONTACT INFORMATION

Caltrain has established a project information line and project e-mail for Caltrain Electrification to record and respond to questions and comments from residents and stakeholders.


The project information line can be reached at **650.399.9659** or toll free at **800.660.4287**.

The project e-mail is calmod@caltrain.com

Sign up for weekly construction updates can be found online at: www.calmod.org/get-involved

FOR MORE INFORMATION

 calmod.org

 Para traducción llama al 1.800.660.4287
如需翻譯,請電 1.800.660.4287
Cần dịch thuật, xin gọi 1.800.660.4287

CONTACT

MAIL: 2121 S. El Camino Real, Suite 300
San Mateo, CA 94403

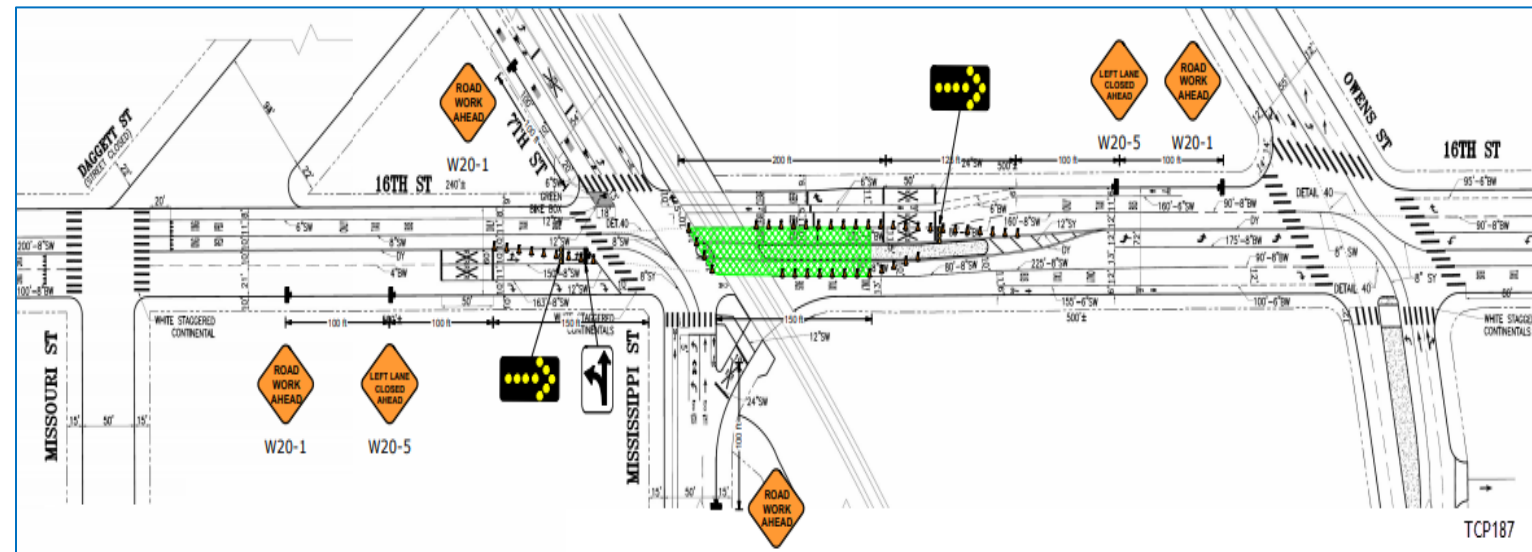
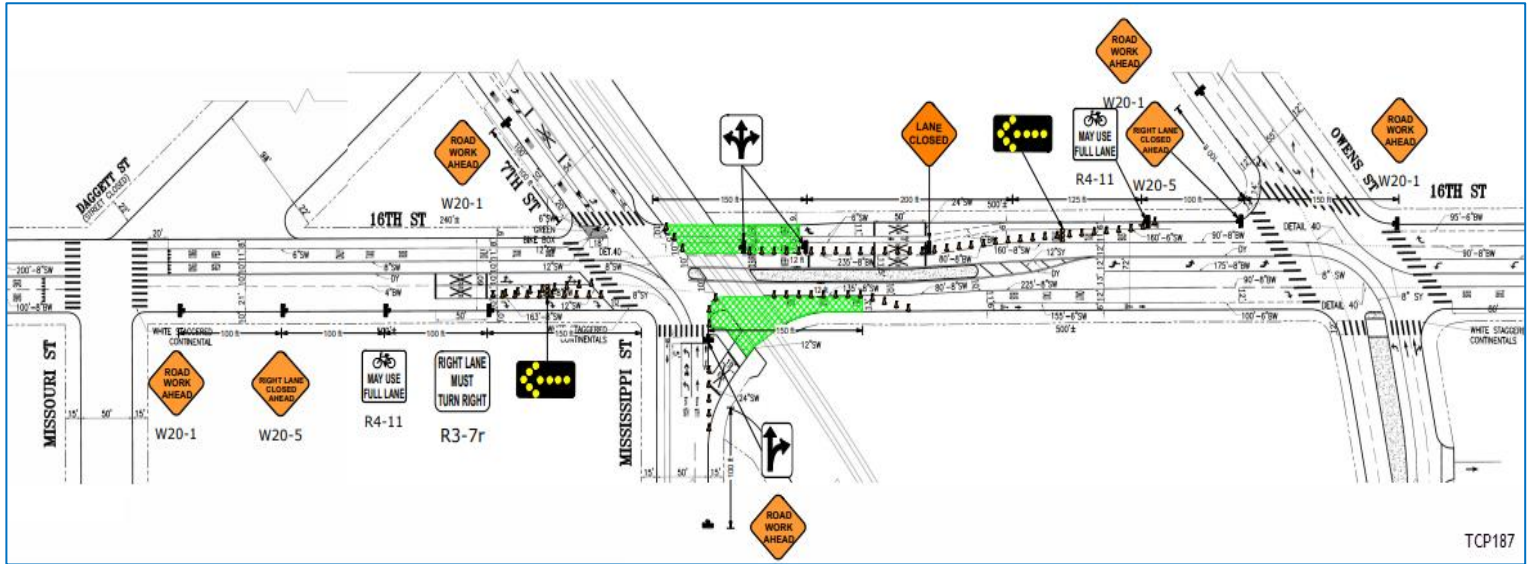
 650.399.9659

 calmod@caltrain.com

Caltrain Electrification Project


16TH STREET LANE CLOSURE NOTICE | August, 2021

LANE CLOSURE MAP





FOR MORE INFORMATION

 calmod.org

 Para traducción llama al 1.800.660.4287
如需翻譯,請電 1.800.660.4287
Cần dịch thuật, xin gọi 1.800.660.4287

CONTACT

MAIL: 2121 S. El Camino Real, Suite 300
San Mateo, CA 94403

 650.399.9659
 calmod@caltrain.com

