

# CALTRAIN ELECTRIFICATION



## 16<sup>th</sup> STREET CLOSURE NOTICE | November, 2021

### UPCOMING ACTIVITIES AND LANE CLOSURE

On the evening of November 16, Caltrain will begin performing foundation installation work in San Francisco that will require a temporary closure of the 16<sup>th</sup> Street railroad crossing at 7<sup>th</sup> Street and Mississippi Street to vehicle and bicycle traffic.

**From 8 p.m. on November 16 to 6 a.m. on November 17 there will be a temporary closure of the 16<sup>th</sup> Street railroad crossing.**

Directional signs will direct vehicle traffic to Mission Bay Drive and Mariposa Street on the night of the closure. Pedestrian crossings may be closed for up to 30 minutes and shuttle service will be available to assist pedestrians during the closures.

Detour maps are provided on the reverse of this notice for vehicle and bicycle traffic.

### CONSTRUCTION ACTIVITIES

During the closure, crews will install concrete foundations for Caltrain Electrification. Work will consist of excavation, placement of rebar, concrete fill, electrical grounding, and the installation of foundations. Crews will utilize on-track equipment that requires the temporary closure of the above railroad crossing.

Crews will also be working along the Caltrain corridor to install foundations outside of the closure hours noted above. Work may take place during the day and at night, with night work occurring between 10 p.m. and 5 a.m. There may also be occasional 24-hour work on weekends.

Caltrain will work with contractors to minimize night work to limit the impact to surrounding communities; however, some work must be performed at night in order to maintain regular Caltrain service. To mitigate noise and other impacts during night activities, the field team

will utilize acoustical noise barrier blankets and will position lights away from residential and business areas. Caltrain has established a dedicated project hotline and email for residents concerned about these potential impacts.

### PROJECT OVERVIEW

Over the last decade, Caltrain has experienced a substantial increase in ridership and anticipates further increases in ridership demand as the Bay Area's population grows. Caltrain Electrification, scheduled to be operational by 2024, will electrify and upgrade the performance, operating efficiency, capacity, safety, and reliability of Caltrain's commuter rail service.

Caltrain electrification is a key component of the Caltrain Modernization Program and consists of replacing diesel-hauled with an electric train system for services between Fourth and King Street Station in San Francisco and the Tamien Station in San Jose. The project will include the installation of new electrical infrastructure and the purchase of electric trains.

### CONTACT INFORMATION

Caltrain has established a project information line and project e-mail for Caltrain Electrification to record and respond to questions and comments from residents and stakeholders.


The project information line can be reached at **650.399.9659** or toll free at **800.660.4287**.

The project e-mail is [calmod@caltrain.com](mailto:calmod@caltrain.com)

Sign up for weekly construction updates can be found online at: [www.calmod.org/get-involved](http://www.calmod.org/get-involved)


#### FOR MORE INFORMATION

 [calmod.org](http://calmod.org)

 Para traducción llama al 1.800.660.4287  
如需翻譯,請電 1.800.660.4287  
Cần dịch thuật, xin gọi 1.800.660.4287

#### CONTACT

MAIL: 2121 S. El Camino Real, Suite 300  
San Mateo, CA 94403

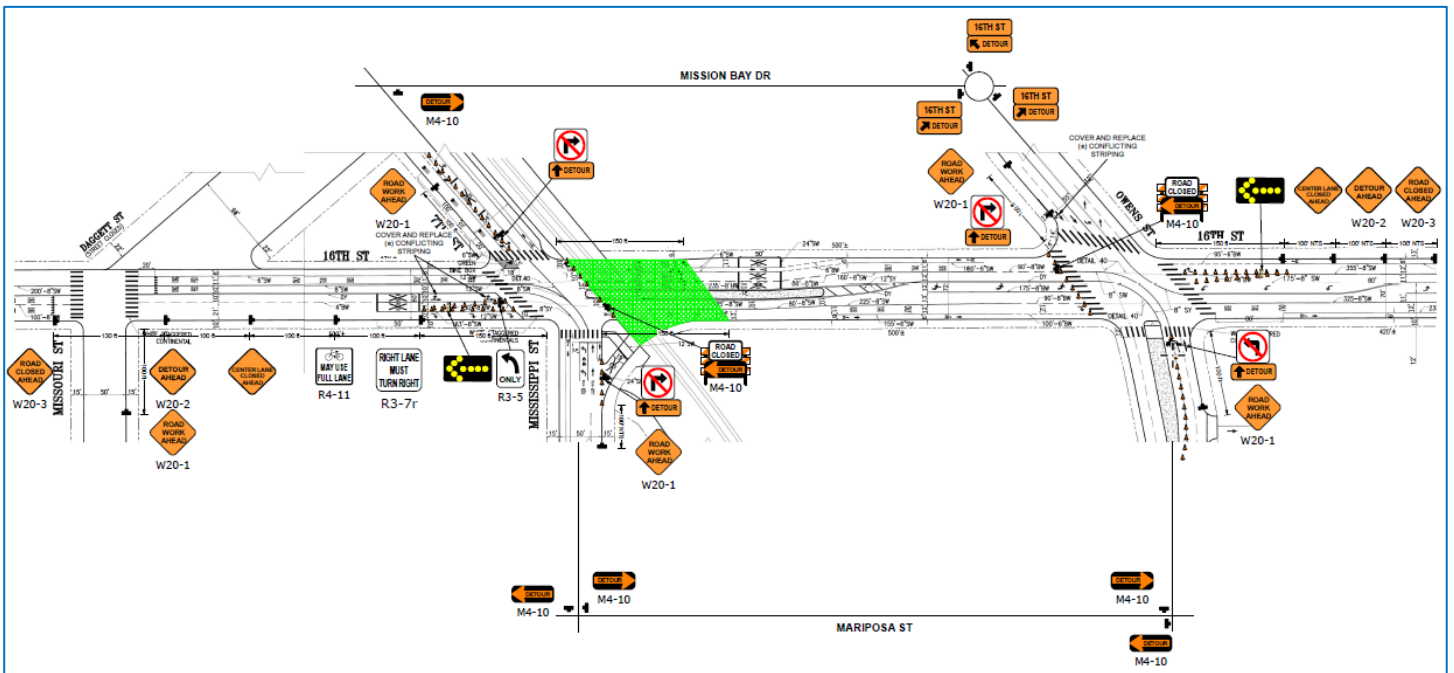
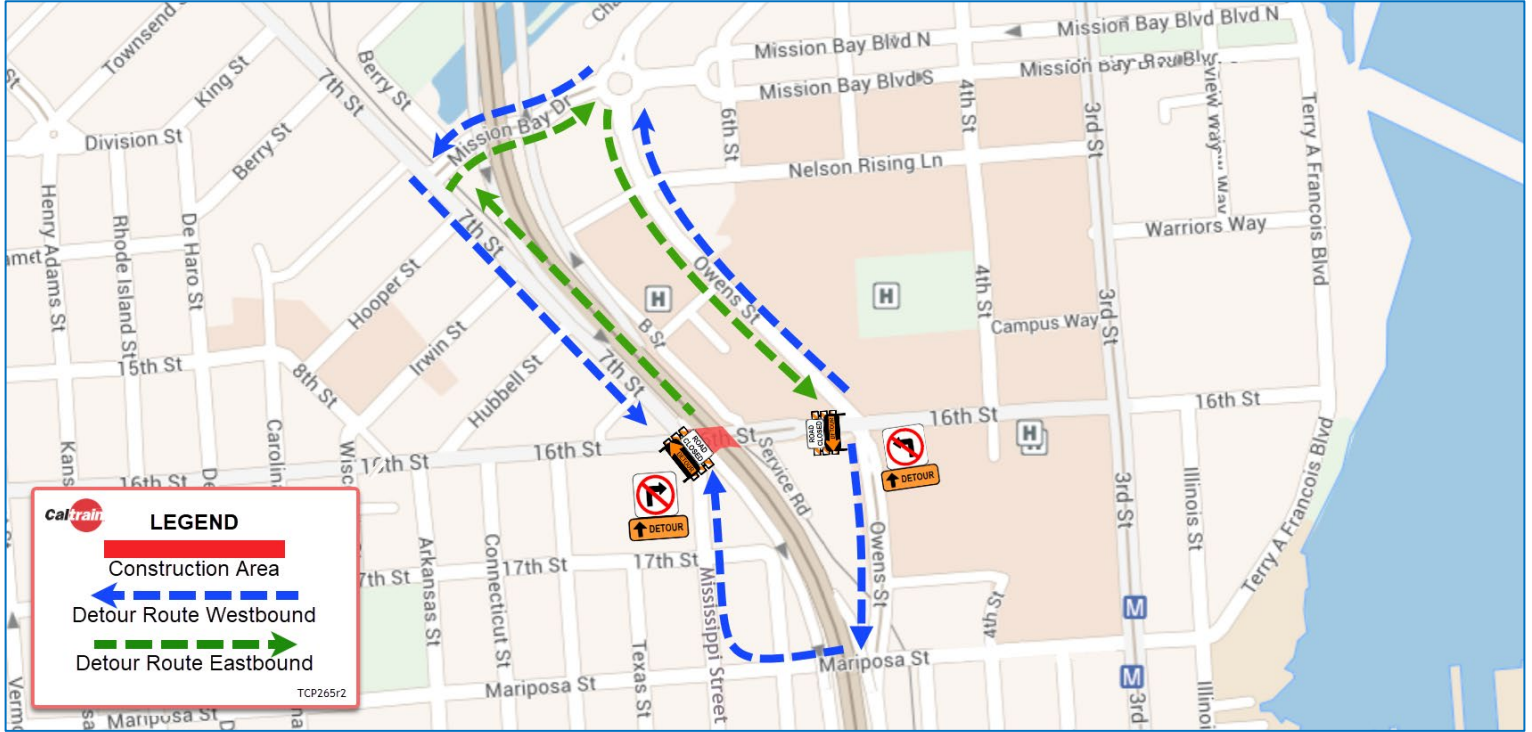
 650.399.9659

 [calmod@caltrain.com](mailto:calmod@caltrain.com)


# Caltrain Electrification Project

## 16th STREET CLOSURE NOTICE | November, 2021

### LANE CLOSURE MAP





#### FOR MORE INFORMATION

 [calmod.org](http://calmod.org)

 Para traducción llama al 1.800.660.4287  
 如需翻譯,請電 1.800.660.4287  
 Cần dịch thuật, xin gọi 1.800.660.4287

#### CONTACT

MAIL: 2121 S. El Camino Real, Suite 300  
 San Mateo, CA 94403

 650.399.9659  
 [calmod@caltrain.com](mailto:calmod@caltrain.com)

