



CalMod

April 2018

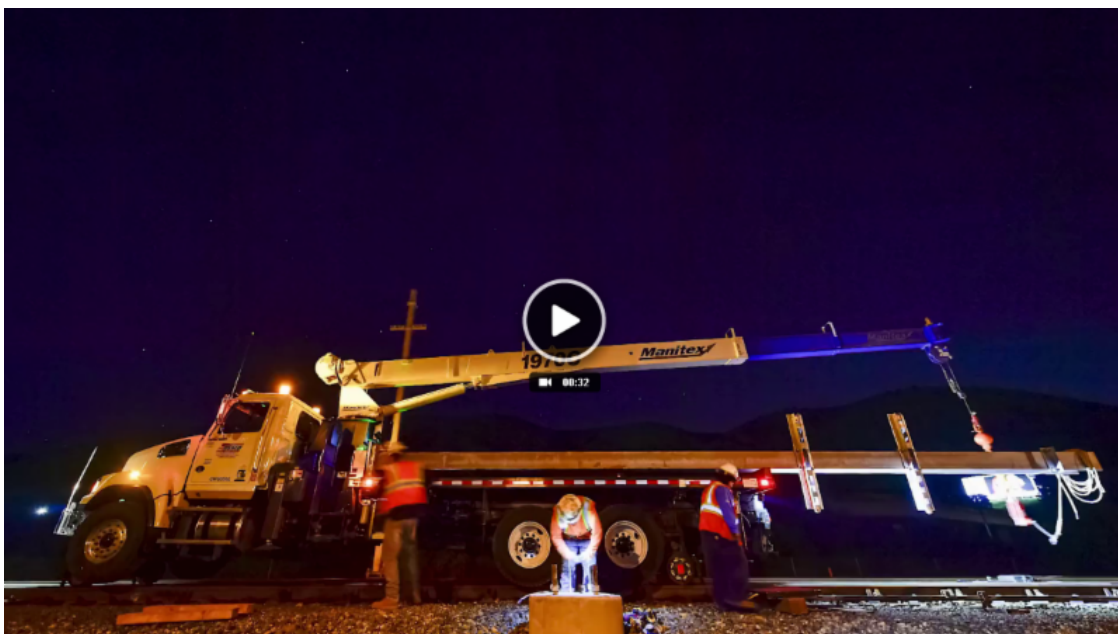
CALMOD E-NEWS: APRIL 2018

WHAT IS CALMOD?

The Caltrain Modernization Program (CalMod) includes electrification and other projects that will upgrade the performance, efficiency, capacity, safety and reliability of Caltrain's service. The current electrification project will electrify the corridor from San Francisco to San Jose and replace 75 percent of Caltrain's diesel service with high-performance electric trains, reducing air pollution and providing better service to more riders.

CalMod.org

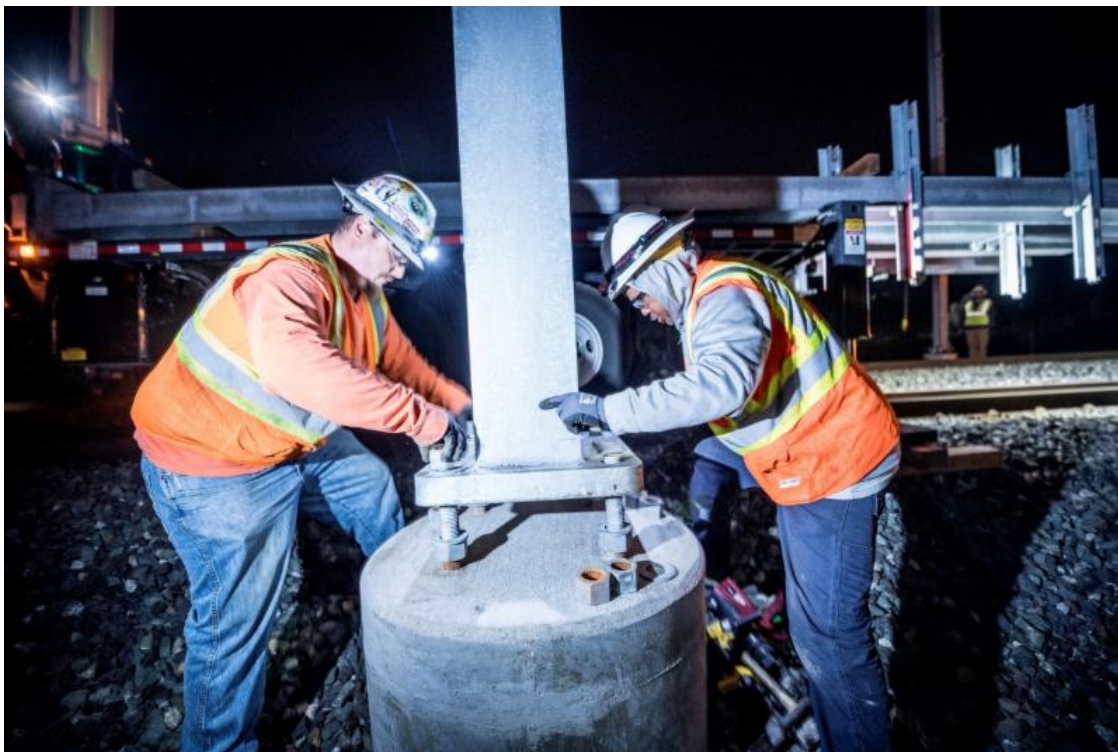
POLE INSTALLATION: TIME-LAPSE VIDEO



Watch what it takes for the project to install a pole once the foundations are in. The poles are manufactured in Texas and will help convert Caltrain from a diesel to electric system. Thanks to the crews for their hard work both here and in the Lone Star State!

View the [time-lapse video](#) and more construction photos at the [CalMod.org/Gallery](#).

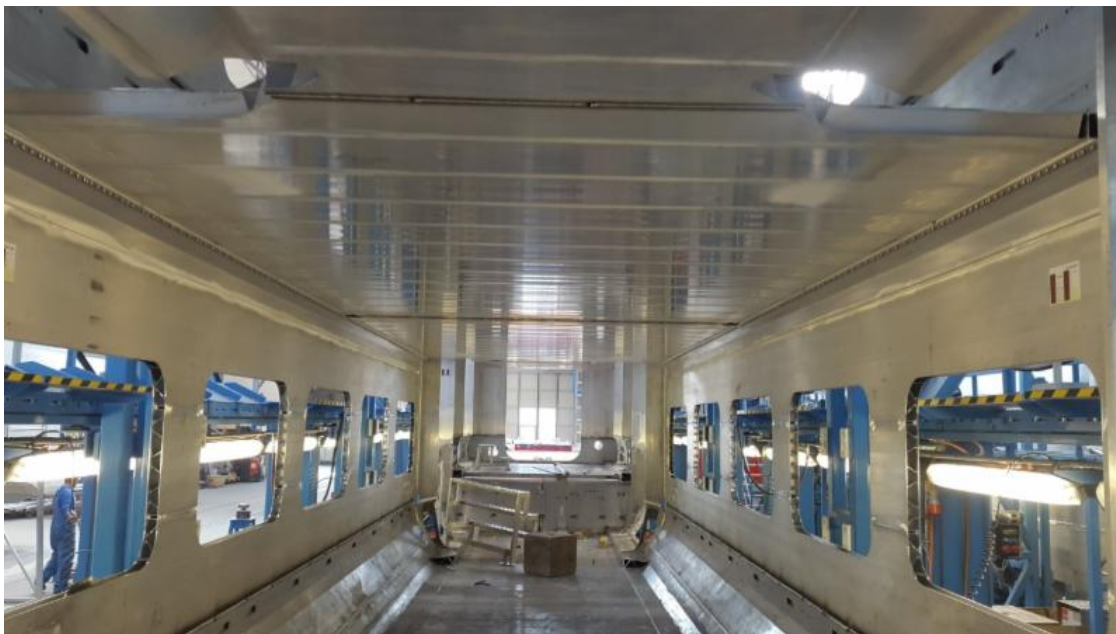
CONSTRUCTION UPDATE



Construction to make Caltrain a modern, electric commuter rail system continues! In April, crews continued foundation installation in South San Francisco, San Bruno, Millbrae, Burlingame, and San Mateo. Pole installation work began in South San Francisco, San Bruno and Millbrae. Crews also continued potholing activities in Santa Clara and San Jose.

To sign up for weekly construction updates or for more construction information, visit CalMod.org/Construction.

ELECTRIC TRAINS UPDATE



April marked another milestone for vehicle manufacturing as the first car shell is readied for painting! The vehicles continue to take shape as carbody subassemblies and the welding of car shell structures continues.

View more pictures at CalMod.org/Gallery.

UPCOMING EVENTS

Local Policy Makers Group (LPMG)

May 24, 2018 at 5:30 pm
SamTrans Administrative Offices
Edward J. Bacciocco Auditorium
1250 San Carlos Ave, San Carlos

For more details and a full list of upcoming meetings please visit CalMod.org/events.



STAY CONNECTED:



Caltrain Modernization, 2121 S. El Camino, San Mateo, CA 94403

[SafeUnsubscribe™ {recipient's email}](#)

[Forward this email](#) | [Update Profile](#) | [About our service provider](#)

Sent by lowl@samtrans.com in collaboration with



Try it free today